

Segment	Length	Direction
L163	172.05	S19° 12' 01"E
L164	80.00	S70° 00' 00"E
L165	230.00	N80° 00' 00"E
L166	80.00	N25° 00' 00"E
L167	112.00	N0° 00' 00"E
L168	50.00	N20° 44' 25"W
L169	95.00	N50° 00' 00"W
L170	135.01	N90° 00' 00"W
L171	219.17	S49° 28' 07"W
L172	287.36	N83° 00' 57"E
L173	79.71	S75° 02' 21"E
L174	92.19	N85° 11' 42"E
L175	63.41	N81° 12' 04"E
L176	10.17	N81° 26' 02"E
L177	0.37	N80° 43' 47"E
L178	31.96	N80° 01' 33"E
L179	30.02	N7° 54' 01"W
L180	30.88	S80° 01' 33"W

Segment	Length	Direction
L181	74.47	S81° 12' 04"W
L182	85.91	S85° 11' 42"W
L183	80.29	N75° 02' 21"W
L184	260.61	S83° 00' 57"W
L185	65.00	S22° 00' 00"W
L186	150.00	S44° 00' 00"W
L187	250.00	N72° 00' 00"W
L188	84.99	N7° 36' 45"W
L189	228.50	N84° 50' 11"W
L190	80.00	S80° 00' 00"W
L191	50.00	N50° 00' 00"E
L192	230.00	N22° 00' 00"W
L193	61.07	N68° 01' 46"W
L194	30.00	N90° 00' 00"W
L195	50.00	S53° 05' 28"W
L196	105.00	S0° 00' 00"E
L197	100.00	S30° 00' 00"E
L198	125.00	S68° 00' 00"E



See Sheet PL.6.02

**Notes:**  
 1. EASEMENTS SHOWN ARE GRANTED TO THE HOMEOWNERS ASSOCIATION.

**OWNER:**  
 Silo Ridge Ventures Property A, L.L.C.  
 5021 Route 44  
 Amenia, New York 12501  
 845.373.8020

**ENVIRONMENTAL PLANNING & CIVIL ENGINEERING:**  
  
**VHB**  
 Engineering, Surveying & Landscape Architecture, P.C.  
 Planning  
 Transportation  
 Land Development  
 Environmental Services  
 50 Main Street, Suite 360  
 White Plains, New York 10606  
 914.467.6600 • FAX 914.761.3759

**PROJECT SURVEYOR:**  
 Kirk K. Horton, Land Surveyor  
 NYS License No. 049954  
 9 Broadway  
 Amenia, New York 12501  
 845.373.7809



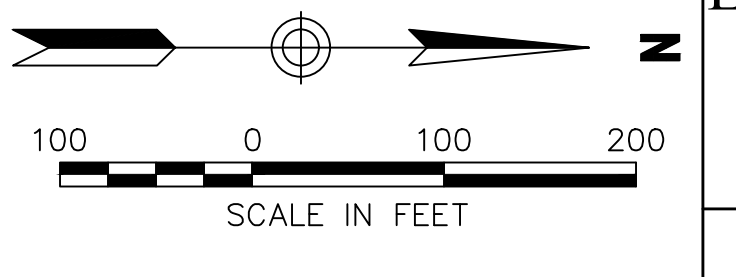
Rev.	Revision	Date	Prep'd
1	As Shown	January 8, 2015	MB

**Silo Ridge Field Club**  
 4651 Route 22, Town of Amenia  
 Dutchess County, New York

**Preliminary Subdivision Plat**

Not Issued for Construction

**Drainage - HOA Easements 1**



Project Title: \_\_\_\_\_  
 Drawing Number: **PL6.01**  
 Sheet of: \_\_\_\_\_  
 Project Number: **29011.00**



Notes:  
1. EASEMENTS SHOWN ARE GRANTED TO THE HOMEOWNERS ASSOCIATION.

OWNER:  
Silo Ridge Ventures Property A, LLC  
5021 Route 44  
Amenia, New York 12501  
845.373.8020

ENVIRONMENTAL PLANNING & CIVIL ENGINEERING:

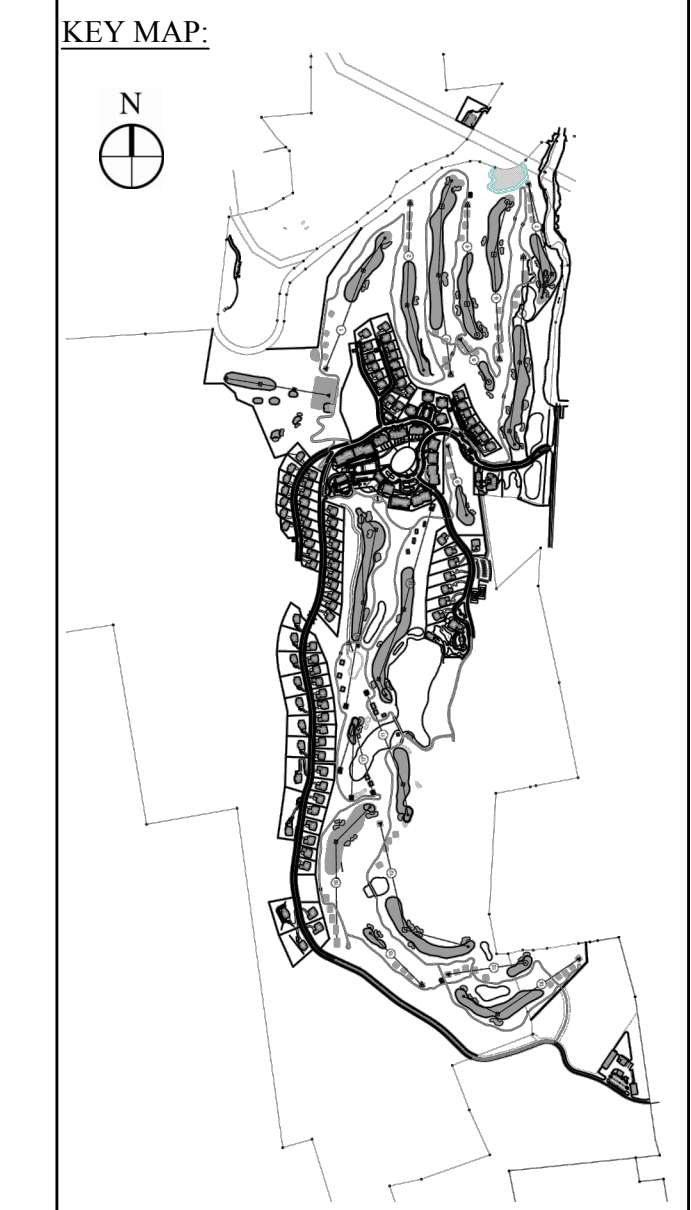
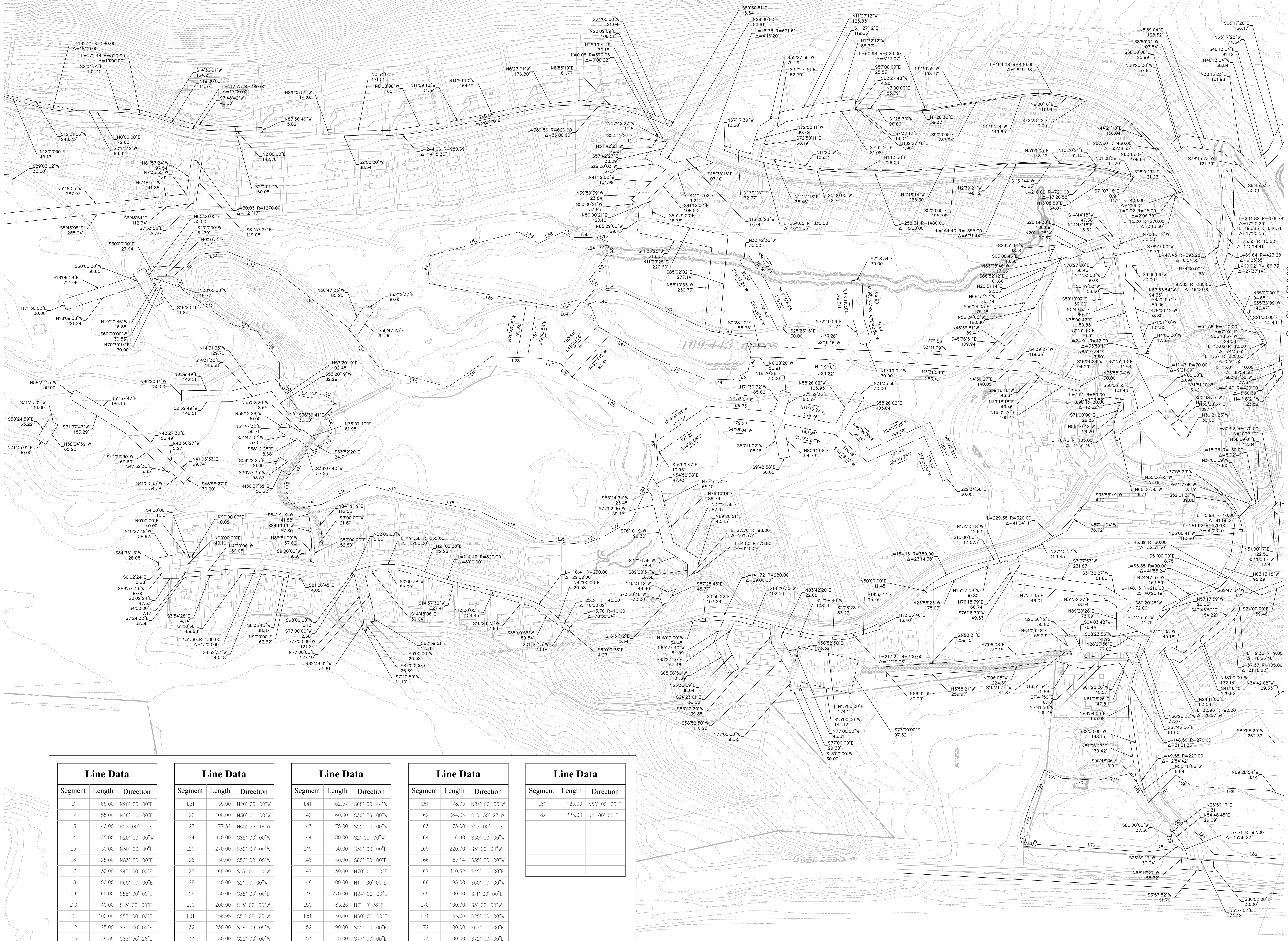
**VHB**

Engineering, Surveying & Landscape Architecture, PC  
Planning  
Transportation  
Land Development  
Environmental Services  
50 Main Street, Suite 360  
White Plains, New York 10606  
914.467.6600 • FAX 914.761.3759

PROJECT SURVEYOR:  
Kirk K. Horton, Land Surveyor  
NYS License No. 049954  
9 Broadway  
Amenia, New York 12501  
845.373.7809

See Sheet PL6.01

See Sheet PL6.03



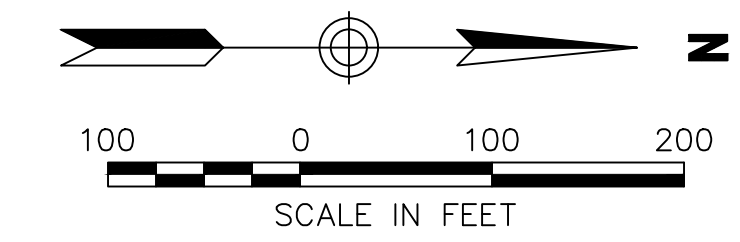
Line Data		
Segment	Length	Direction
L1	65.00	N90° 00' 00"E
L2	55.00	N28° 00' 00"E
L3	40.00	N13° 00' 00"E
L4	35.00	N20° 00' 00"W
L5	30.00	N30° 00' 00"E
L6	25.00	N83° 00' 00"E
L7	30.00	S45° 00' 00"E
L8	50.00	N65° 00' 00"E
L9	60.00	S55° 00' 00"E
L10	40.00	S15° 00' 00"E
L11	100.00	S83° 00' 00"E
L12	25.00	S75° 00' 00"E
L13	38.38	S88° 56' 28"E
L14	50.00	N20° 00' 00"E
L15	65.00	N10° 00' 00"W
L16	135.00	N25° 00' 00"W
L17	160.00	N15° 00' 00"E
L18	180.00	N12° 00' 00"E
L19	185.00	N26° 00' 00"E
L20	125.00	N5° 00' 00"E

Line Data		
Segment	Length	Direction
L21	55.00	N20° 00' 00"W
L22	160.30	N30° 36' 00"W
L23	177.52	N65° 26' 18"W
L24	110.00	S85° 00' 00"W
L25	270.00	S30° 00' 00"W
L26	50.00	S50° 00' 00"W
L27	60.00	S15° 00' 00"W
L28	140.00	S2° 00' 00"W
L29	150.00	S35° 00' 00"E
L30	200.00	S15° 00' 00"W
L31	156.99	S51° 08' 25"W
L32	250.00	S38° 09' 09"W
L33	150.00	S22° 00' 00"W
L34	80.00	S5° 00' 00"E
L35	100.00	S40° 00' 00"E
L36	48.89	N52° 12' 44"E
L37	169.24	N35° 00' 00"E
L38	75.00	N15° 00' 00"E
L39	110.00	N55° 00' 00"E
L40	23.10	S30° 00' 00"W

Line Data		
Segment	Length	Direction
L41	62.37	S68° 00' 44"W
L42	160.30	S10° 36' 00"W
L43	175.00	S22° 00' 00"W
L44	110.00	S2° 00' 00"W
L45	50.00	S30° 00' 00"E
L46	50.00	S80° 00' 00"E
L47	50.00	N70° 00' 00"E
L48	100.00	N10° 00' 00"E
L49	270.00	N24° 00' 00"E
L50	83.26	N7° 10' 39"E
L51	30.00	N60° 00' 00"E
L52	90.00	S55° 00' 00"E
L53	15.00	S77° 00' 00"E
L54	20.00	N80° 00' 00"E
L55	30.00	N23° 00' 00"E
L56	75.00	N0° 00' 00"E
L57	30.00	N30° 00' 00"E
L58	75.00	N25° 00' 00"W
L59	65.00	N30° 00' 00"E
L60	260.00	N15° 00' 00"W

Line Data		
Segment	Length	Direction
L61	78.73	N84° 00' 00"W
L62	364.05	S10° 30' 27"W
L63	75.00	S15° 00' 00"E
L64	16.90	S30° 00' 00"W
L65	220.00	S3° 00' 00"W
L66	57.14	S35° 00' 00"E
L67	110.62	S45° 00' 00"E
L68	95.00	S60° 00' 00"E
L69	100.00	S11° 00' 00"E
L70	100.00	S3° 00' 00"W
L71	55.00	S25° 00' 00"W
L72	100.00	S67° 00' 00"E
L73	100.00	S72° 00' 00"E
L74	30.00	N75° 00' 00"E
L75	30.00	N5° 00' 00"E
L76	13.74	N34° 11' 57"W
L77	310.00	N4° 00' 00"E
L78	80.00	N7° 00' 00"W
L79	55.00	S80° 00' 00"W
L80	50.00	N30° 00' 00"W

Line Data		
Segment	Length	Direction
L81	125.00	N50° 00' 00"E
L82	225.00	N4° 00' 00"E



Rev.	Revision	Date	By

Designed by MB  
Checked by MB  
As Shown  
January 8, 2015

**Silo Ridge Field Club**  
4651 Route 22, Town of Amenia  
Dutchess County, New York

Preliminary Subdivision Plat

Not Issued for Construction

Drainage - HOA Easements 2

Sheet of  
Project Number  
**PL6.02**  
29011.00



Notes:  
1. EASEMENTS SHOWN ARE GRANTED TO THE HOMEOWNERS ASSOCIATION.

OWNER:  
Silo Ridge Ventures Property A, LLC  
5021 Route 44  
Amenia, New York 12501  
845.373.8020

ENVIRONMENTAL PLANNING & CIVIL ENGINEERING:



Engineering, Surveying & Landscape Architecture, PC  
Planning  
Transportation  
Land Development  
Environmental Services  
50 Main Street, Suite 360  
White Plains, New York 10606  
914.467.6600 • FAX 914.761.3759

PROJECT SURVEYOR:  
Kirk K. Horton, Land Surveyor  
NYS License No. 049954  
9 Broadway  
Amenia, New York 12501  
845.373.7809

KEY MAP:

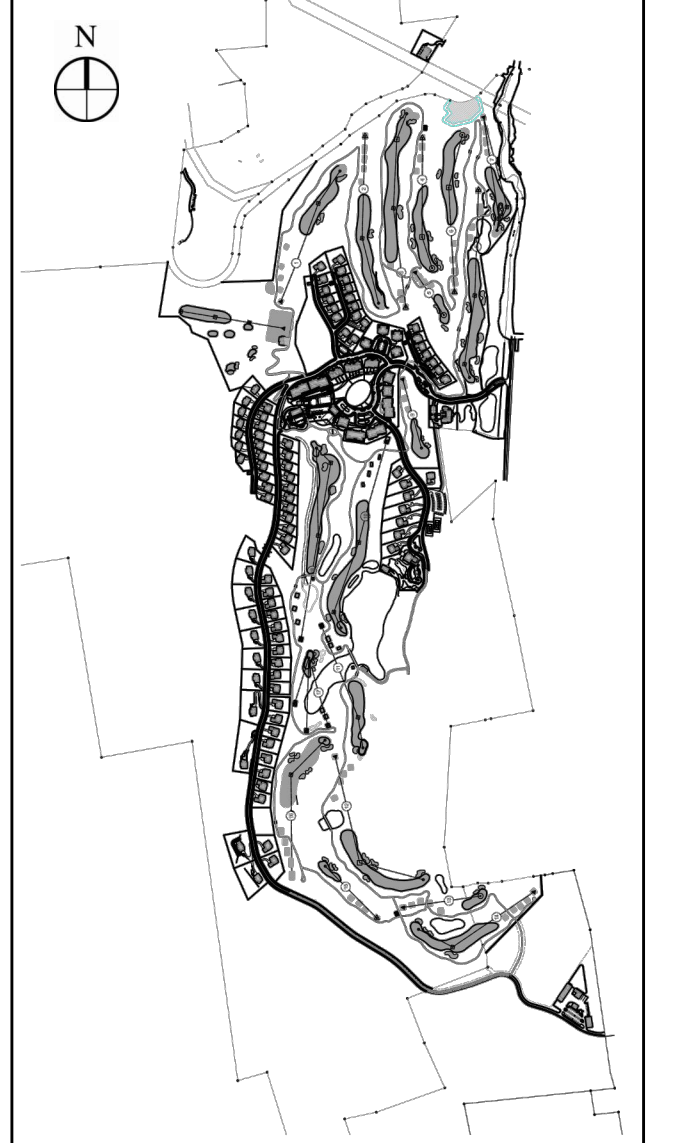


Table with columns: No., Revision, Date, Appr'd. The table is mostly empty, indicating no revisions.

Silo Ridge Field Club  
4651 Route 22, Town of Amenia  
Dutchess County, New York  
Preliminary Subdivision Plat

Not Issued for Construction  
Drawing Number: PL6.03

Sheet of  
Project Number: 29011.00  
S:\DWG\EASEMENTS.DWG



See Sheet PL6.02

Line Data tables providing segment, length, and direction for various easement lines. The tables are organized into five columns, each with a header 'Line Data' and sub-headers 'Segment', 'Length', and 'Direction'.

